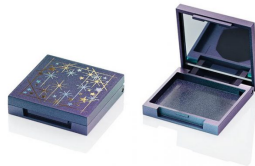
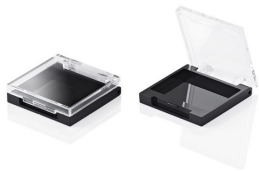


Fusion Square Solo Eyeshadow Compact

The 'Fusion Square' range offers the widest choice of compacts, palettes and kits in HCP's stock portfolio. The Fusion Square Eyeshadow Solo Compact (2 piece) follows the slim, minimal aesthetics of the Fusion range, with the option to either opaque mould the cover and add a full size mirror or clear mould for shade ID. This compact is also suitable for concealer or colour correction products.

HCP Ref:

Two-piece base with insert: 96L, Two-piece base with down-plate: 15A
<https://www.hcpackaging.com/product/fusion-square-eyeshadow-solo-2-piece/>



Profile	Dimensions	Insert Options	Special Features
Sharp Square	Height: 10mm Width: 40.8mm Depth: 40.8mm Well/s Dimensions: W: 37.8 D: 30.5x H: 4.0mm	Insert Options: Metal Pressing Pan	Mirror Clasp/Finger Recess Opening Clear Cover/Shade ID

Manufacturing Location

Asia