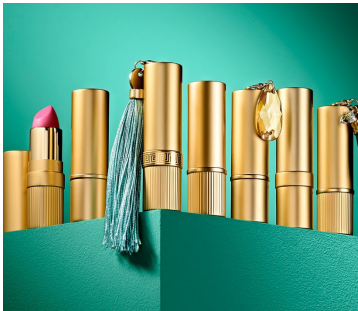


Harmony Luxe Aluminium Lipstick With Slim Band (Mono-Material)

HCP's new stock 'Harmony Luxe' Lipstick has a ferrule with a slim raised band & a sleek mono-material all-aluminium design that optimises recyclability whilst retaining a premium appearance. Offered with a fluted or smooth base and an optional loop to attach a hanging charm.

HCP Ref:
 Smooth Cap: 502H
 Smooth Cap with Loop: 507N
 Slim Collar: 502H
 Smooth Base: 502H
 Fluted Base: 507N
<https://www.hcpackaging.com/product/harmony-luxe-aluminium-lipstick-with-slim-band-mono-material/>



Profile	Dimensions	Materials	Godet/Cup Size
Round/Cylindrical	Height: 65mm/67mm with loop Diameter: 18mm	Cap: Aluminium Shoulder: Aluminium Base: Aluminium Sleeve: Aluminium	Full Size: 12.1mm
Mechanism	Special Features	Manufacturing Location	
Material: Aluminium Type: Twist	Mono-material	Asia	